



## ST18 65-66 PONY DOOR PANEL INSTALLATION INSTRUCTIONS

Please follow instructions carefully. Failing to do so may cause a lengthy installation and possible damage to the door panels. Remove your new TMI panels from box, place on your workbench with a blanket to protect new door panels. Inspect them for any damage that may have occurred during shipping. Note: Once installation has been started panels are not returnable.

If you are upgrading from standard to pony door panels you will also need the following:

- ST19 65-66 Pony Door Panel Stainless Steel Trim Set
- PE9877 65-66 Pony Door Panel Trim Screw - total 6 required
- ST20 65-66 Pony Door Panel Cups - pair
- PE5060 Screws for above Cups - Set of 4
- ST21 65-66 Pony Door Panel Cup inserts - Pair
- ST22 65-67 Pony Door Panel Cup Brackets - Pair
- PE5070 Screws and Clips to Mount above Brackets to Door-Set (both sides)
- PE420 Pony Door Panel Clips-Set of 15 (2 sets required)
- ST23L 65-66 LH Door Handle Shaft Assembly (Pony Panels require this longer one)
- ST23R 65-66 RH Door Handle Shaft Assembly (Pony Panels require this longer one)
- ST25L 65-66 LH Inside Pony Door Handle (Pistol Grip with Woodgrain)
- ST25R 65-66 RH Inside Pony Door Handle (Pistol Grip with Woodgrain)
- ST26 65-66 Pony Door Handle Escutcheons-Pair (fit behind door handles)

Optional parts include the following:

- IN412 65-66 Deluxe/Pony Interior Door Light Assembly (2 required)
- WG100 65-66 Door Light Wiring (2 required)
- WG101 65-66 Door Light Wiring w/Speaker Wiring (use in place of above if you have optional door speakers) (2 required)

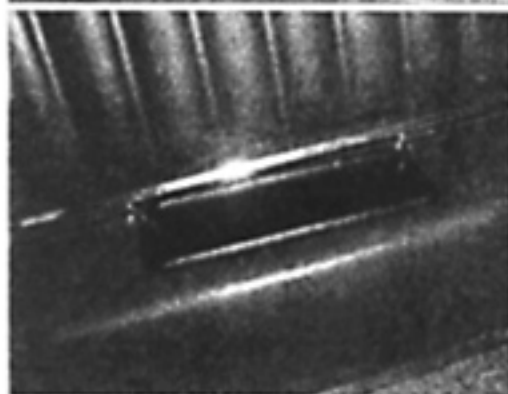
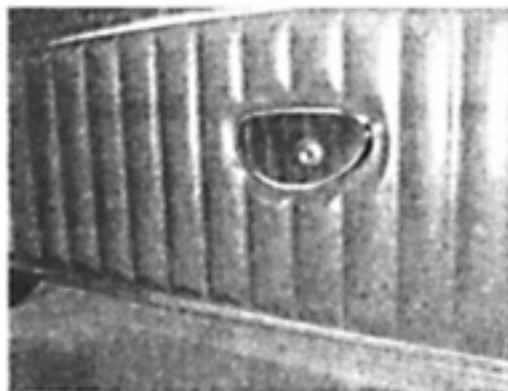
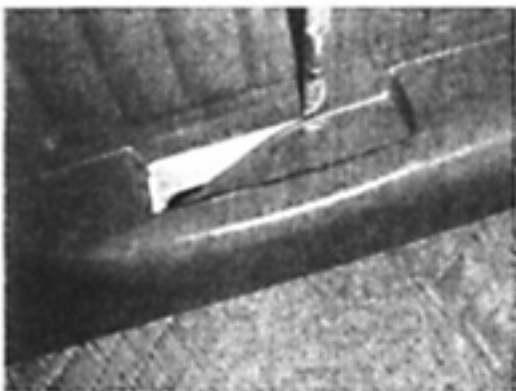
All of the above parts are available on our Online Catalog

### Tools Required:

a) Hobby Knife b) Trim pad remover tool c) Spoon

1. Unscrew window crank (early 1965 cranks are clipped on/later use Allen bolts) and door handle pulls (early 1965 cranks are clipped on/later use Allen bolts). Remove door handle latch escutcheon and spring. Clean removed parts.
2. Remove door handle cup inserts. Unscrew screws inside the door handle cup, and remove door handle cup.
3. Use trim pad removing tool to remove door panels.
4. If adding pony door lights, cut door and add new lights with new wire harness.
5. Remove and replace door handle latch (inside) and replace with pony door handle latch. This must be done, standard handles and latches will not work with pony door panels.
6. Also if upgrading to a remote mirror change mirror at this time.

7. If you have just removed pony door panels then turn door panel over and remove screws holding in the outer chrome trim. Carefully remove outer chrome trim molding from original panel. Remove chrome carefully to avoid bending. Clean molding and set Chrome aside. Remove inner chrome trim molding by unbending the tabs on the backside of the panel for the molding. Clean molding and set Chrome aside. DO NOT set the trims on top of the new panel until you are ready to reinstall the trim on the new panels! The tabs are sharp and can perforate the vinyl.
8. Cut out the bottom of the door pull, and any excess foam that would prevent the door handle cup from fitting into place.
9. Install the door panel cup. Note: Vinyl may pull down with cup. Carefully use a spoon to push the vinyl material back into place.
10. If your Mustang is equipped with a remote mirror, use your hobby knife to cut out the supplied relief on the backside of the panel.
11. The inner chrome trim can now be pushed through the holes and tabs bent over.
12. Slide the outer chrome trim over the outside edge of the door panel and attach.
13. Install the Door Panel clips (new – original may be used but note may not hold door panel in place due to age, stretching, and breaking). NOTE: Deluxe door panel clips are needed
14. If you have a remote mirror attach the control knob to door panel.
15. Locate your Pony Door Panel onto door using the Pony door handle latch. Push the panel into position and snap door panel clips into place.
16. Screw down the Pony door handle cups, and replace cup inserts back into cup.
17. Lastly reinstall the window cranks, door handle latch escutcheon with spring, and door handle pulls.



**Part# 10-70105**